



Handover Card

Mini diggers

Parts included	Buckets, bucket pins, key, beacon, tracker
Recommended Safety equipment	Ear defenders, hi-vis jacket, safety footwear, safety helmet
Consumables	Diesel



Step 1 - Excavator Usage and environment

- Safe use area for the machine.
 - Tail swing area clear
 - No overhead obstructions
 - Adequate ventilation
 - Ensure roll bar is in upright position on micro diggers. Secure in place with safety pins.

The seat belt must be secured at all times when operating digger



Step 5 – Slew locking pin

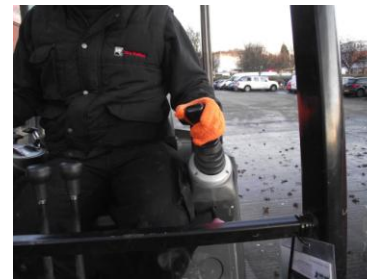
Lift the lever up and across to the right to unlock the cab.

The pin should be placed into the lock position before transporting the digger.



Step 2 – The instrument panel

- Beacon switch
- Operating light switch
- Fuel level gauge
- Ignition key
- Heater plug light



Step 6 – Left hand control lever

Always check for obstacles before moving the slew.

Move the lever left and right to turn the cab around 360 degrees as required.

Ensure slew locking pin is off (see Step 5) before turning the cab left or right.

Move lever forwards/backwards to raise/lower arm.



Step 3 – Driving forward / reversing

Check position of the dozer blade. If it can be seen in front of you, the machine operates as follows:

- Push both control levers forward at the same time to go forwards
- Pull them both towards you at the same time to go backwards.

If dozer blade can't be seen, reverse controls



Step 7 – Right hand control lever

Pull the right hand controller back towards you to raise the boom. Push it forward away from you to lower the boom.

Moving lever to the right opens the bucket and to the left to close the bucket.

The button on the top of the lever operates the horn.



Step 4 – Turning the machine

To turn the machine:

- To the left, push the right lever forwards, left lever back
- To the right, push the left lever forwards, right lever back



Step 8 – Operating the bulldozer

- Push the lever forward to lower the dozer blade, pull backwards to raise the blade

• Ensure the bulldozer is raised before moving the machine into position



Handover Card

Mini diggers

Parts included	Buckets, bucket pins, key, beacon, tracker
Recommended Safety equipment	Ear defenders, hi-vis jacket, safety footwear, safety helmet
Consumables	Diesel



Step 9 – Left foot pedal

- Press down on the left side of the foot pedal to turn the arm up to 90 degrees left
- Press down on the right side of the foot pedal to turn the arm up to 90 degrees right

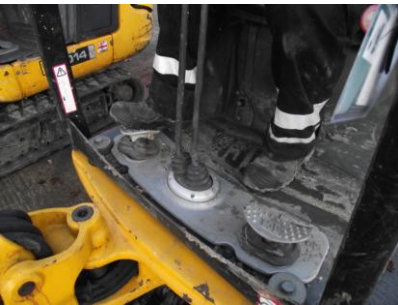
This pedal only operates the digger arm. It does not turn the cab.



Step 13 – Changing the attachments

Select required bucket and fit with the pins provided.

Ensure the bucket pin is secured in place with the locking clip



Step 10 – Right foot pedal

This pedal operates the auxiliary attachments (e.g. the pecker).

To operate the attachment, hold the pedal down.



Check 1 Check 2



Check 3

Step 14 – Daily level checks

Check 1 – Check water level

Check 2 – This is where the oil can be topped up if needed.

Check 3 – Dipstick to check the oil. The oil level should be checked every day.



Step 11 – Starting the machine

Before operation, the left armrest must be lowered securely into position.

Insert the ignition key. Turn the key until the heater plug light lights up. Leave in this position until the light has been lit for 10 – 15 seconds. Then turn the key to the start position (“III”) to start the engine. Repeat if machine fails to start



Step 15 – Re-fuelling the machine

Remove the fuel cap and fit the funnel into the top of the fuel tank.

When the tank is full, remove the funnel and ensure it is returned securely into original position.



Step 12 – Stopping the machine

Ensure all levers are in neutral position.

Turn the ignition key to the off position (“0”).



Step 16 – Essential safety reminders

- Ensure the safety beacon is attached at all times when operating the digger
- Remember to wear the seatbelt at all times
- **To ensure smooth operation when moving the machine around, keep to the lowest throttle setting possible at all times.**
- **This machine is not a crane. Do not use for any pulling or lifting.**